



### About the User Manual

Thank you for choosing and purchasing a model from our range of electric scooters. For your safety, please read this manual carefully before using the scooter to ensure that you can follow the correct instructions and that you understand the safety warnings and precautions for driving before using it.

**Warning: Your misbehavior may put your personal safety at risk.**  
Tips: Precautions to be taken by the user and related usage. If you have any questions or are unable to obtain the information you need from this manual, please contact the seller.

- Tips:**  
A. Minors should be accompanied by their parents.  
B. Persons with poor physical co-ordination or acceptance, or those with no prior experience of using the vehicle, need to learn to use it in the company and co-ordination of another person, or read the instruction manual carefully to ensure that they can follow the correct instructions and understand the safety warnings and tips for driving before using it.  
C. Children are forbidden to clean and maintain this product without a parent.

**This manual describes important safety and use instructions for the electric scooter, please make sure you read it carefully before you use it for the first time. If you do not follow the instructions for use, you may be injured and the company will not be held responsible for any resulting personal injury.**

### Content

1. Information on Safe Use	01-03
2. Product Description	04
3. Learn to Drive	05-06
4. Introduction to the Functions	07
5. Introduction to the Unfolding and Folding of Electric Vehicles	08
6. Instruction for Using the Battery	09-10
7. Basic Parameters	11
8. Daily Maintenance	12
9. Troubleshooting/Packaging List	13

**Users should ride in strict accordance with traffic and road regulations, and where there are special local laws and regulations, they should ride legally in accordance with those laws and regulations.**

### Information on Safe Use

#### 1.1 About Safe Use

There are safety risks associated with any mobility device, and electric scooters are no exception. It is therefore your responsibility and duty to learn how to drive a scooter and to comply with local laws and regulations for your safety. We hope that all drivers can drive their scooters safely and have fun with them.

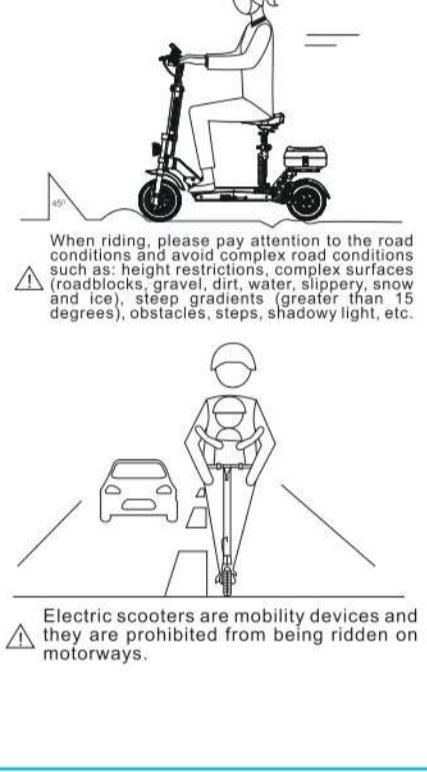
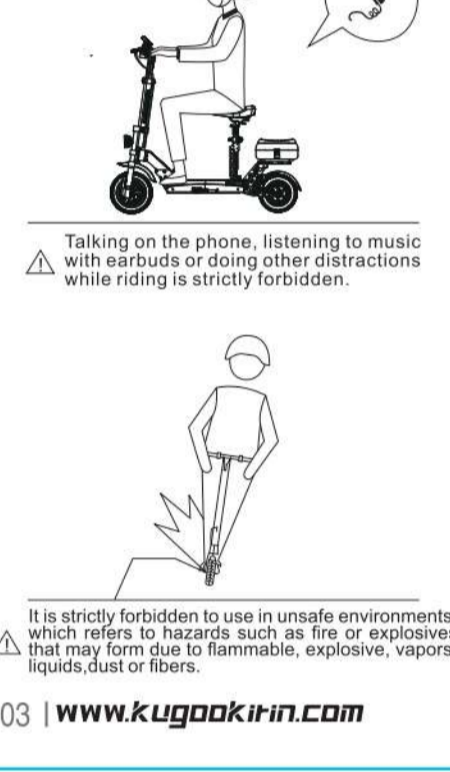
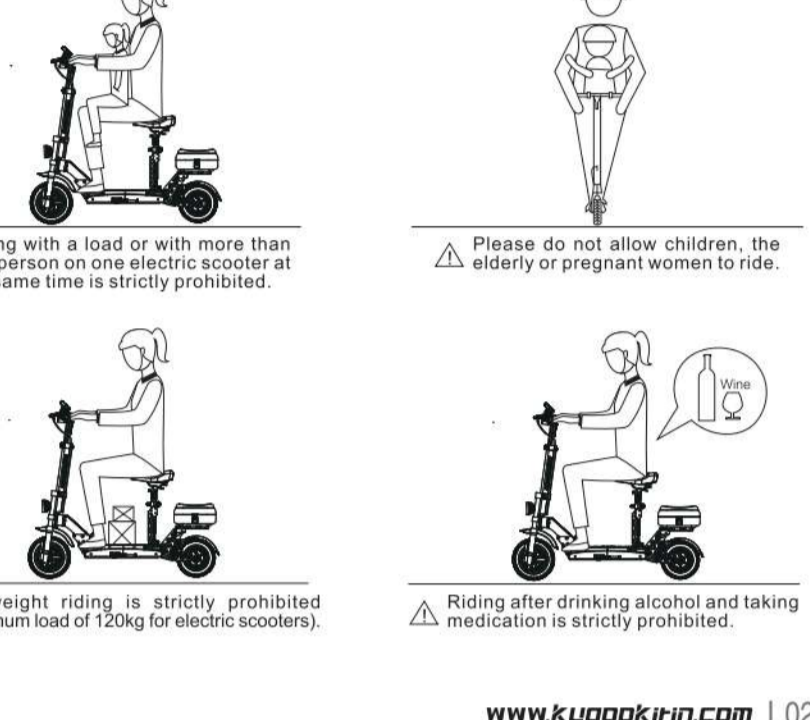
- Before each ride, please check that there is no damage to the tires and no loose parts. If there are any abnormalities, please contact your dealer for repair.
- Please do not do anything with the electric scooter that endangers the safety of your person or property.
- Please do not modify the parts of the electric scooter, this will not only affect the performance of the electric scooter or even damage it, but also cause serious injuries as a result.
- Do not place the scooter in water as this could damage the scooter and cause a safety incident.

#### 1.2 Safety Instruction

No matter what the circumstances of using the scooter you are at risk of injury from loss of control, collisions and falls. To avoid injury, you must familiarize yourself with the manual and ensure that the product is in good working order.

Please take safety precautions when riding, such as wearing sports clothing, helmets, foot paints, elbow pads and other protective gear.

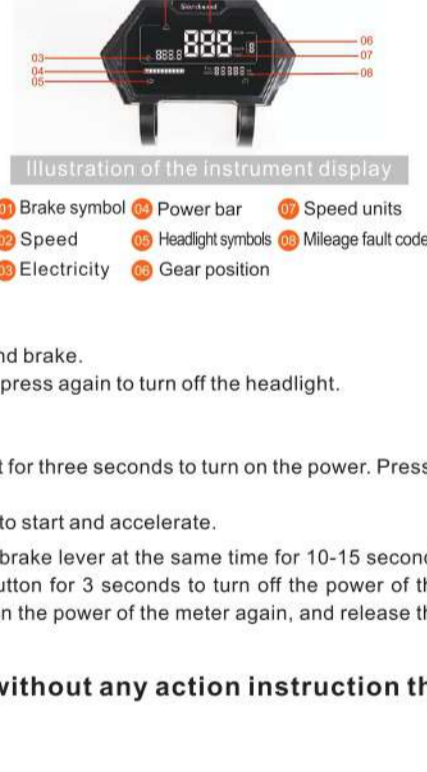
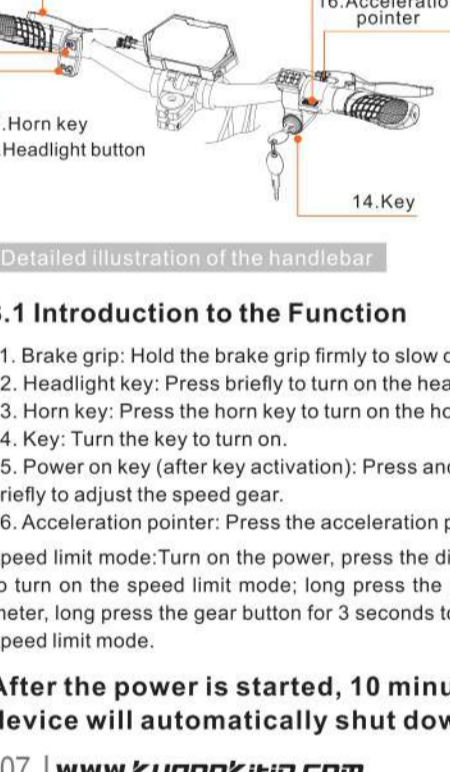
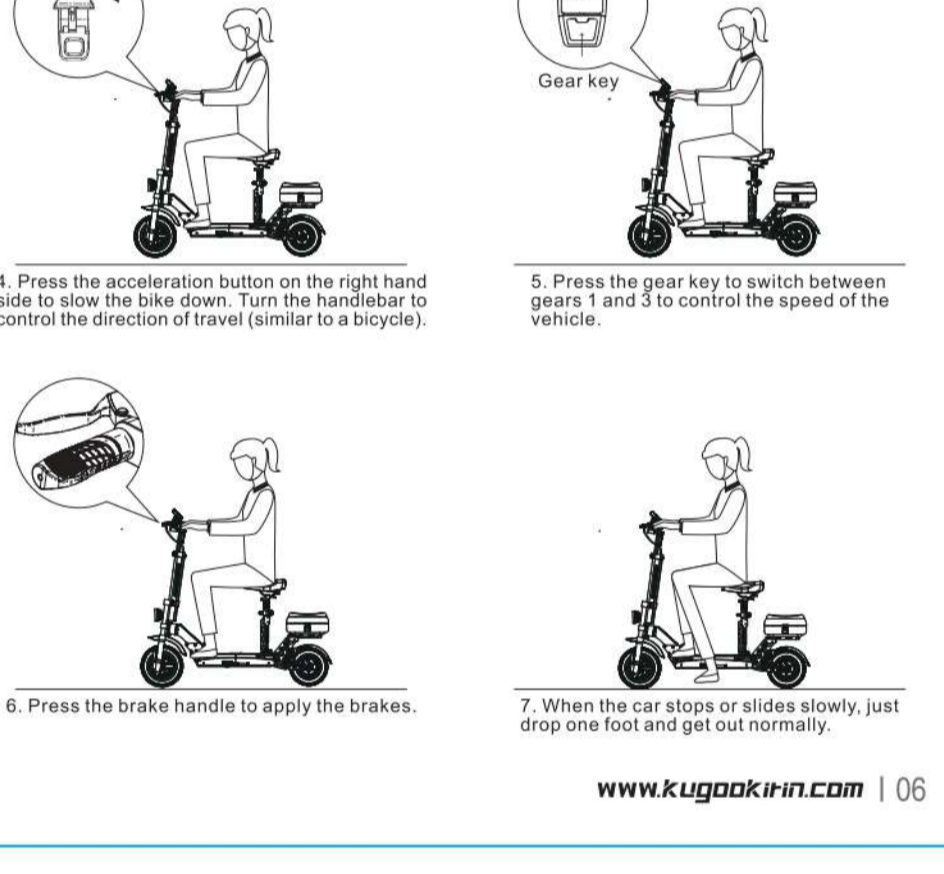
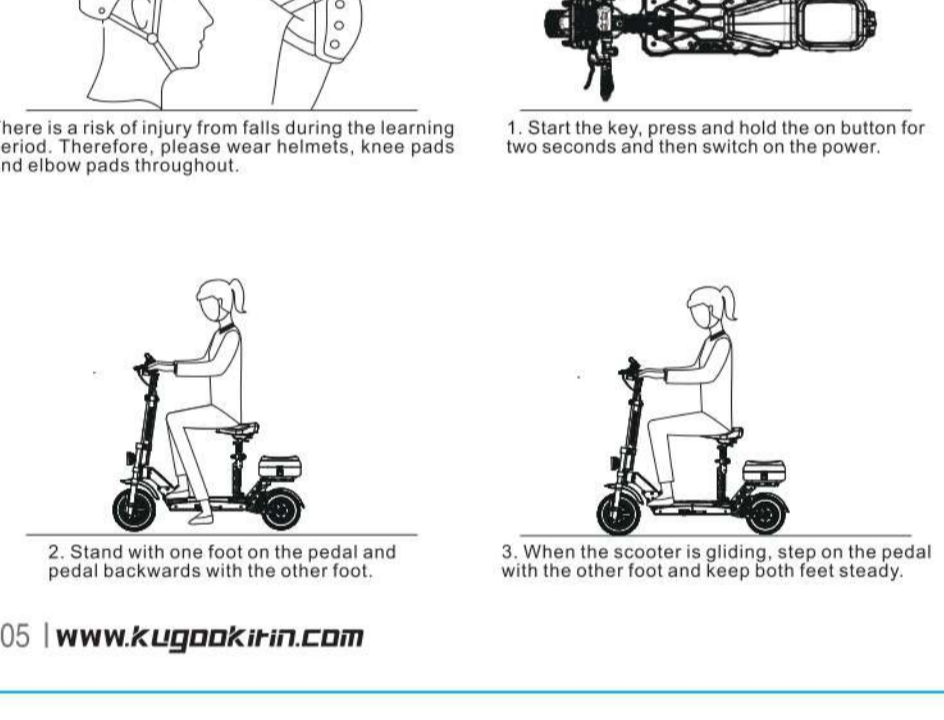
Riding in the rain is strictly prohibited.



### 2.1 Complete Vehicle Diagram



### Learn to Drive



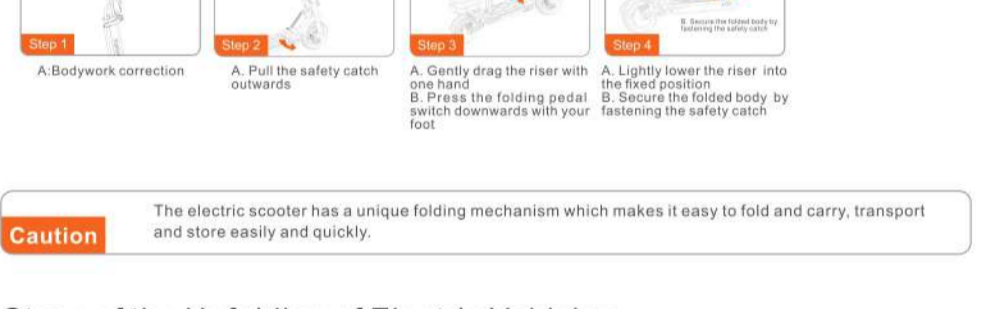
### 3.1 Introduction to the Function

11. Brake grip: Hold the brake grip firmly to slow down and brake.
12. Headlight key: Press briefly to turn on the headlight; press again to turn off the headlight.
13. Horn key: Press the horn key to turn on the horn.
14. Key: Turn the key to turn on.
15. Power on key (after key activation): Press and hold it for three seconds to turn on the power. Press it briefly to adjust the speed gear.
16. Acceleration pointer: Press the acceleration pointer to start and accelerate.

speed limit mode: Turn on the power, press the dial and brake lever at the same time for 10-15 seconds to turn on the speed limit mode; long press the gear button for 3 seconds to turn off the power of the meter, long press the gear button for 3 seconds to turn on the power of the meter again, and release the speed limit mode.

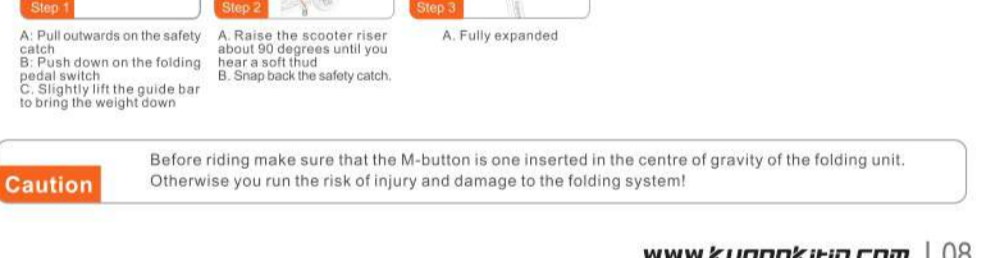
**After the power is started, 10 minutes without any action instruction the device will automatically shut down.**

### Steps of the Folding of Electric Vehicles



**Caution** The electric scooter has a unique folding mechanism which makes it easy to fold and carry, transport and store easily and quickly.

### Steps of the Unfolding of Electric Vehicles



**Caution** Before riding make sure that the M-button is one inserted in the centre of gravity of the folding unit. Otherwise you run the risk of injury and damage to the folding system!

### Instruction for Using the Battery

It mainly describes how to charge the electric scooter, how to take care of the battery, the safety matters that need to be taken care of and explains the battery specifications. For your safety and the safety of others, to maximize the life and performance of the battery, please make sure you use the battery in accordance with the following.

#### 4.1 Detailed Parameters of the Battery

Name	Parameters	Name	Parameters	Name	Parameters
Battery type	Lithium batteries	Operating temperature	0°C-35°C	Storage time	3 months (full charge)
Charging time	8-9H	Charging temperature	0°C-35°C	Initial capacity	20AH
Voltage	48V	Max. charging voltage	54.6V		

#### 4.2 Battery Safety

- Do not continue to use the battery in the following cases.
  - The battery of a scooter may only be used if permitted by local law. Only remove and maintain the battery by the professional.
  - If the battery emits a bad smell or is overheated; if any material is leaking; do not touch any material leaking from the battery.
  - Do not allow children or animals to touch the battery; always disconnect the charger before installing the battery or driving; anything done with the scooter while it is charging is dangerous.
  - If you want your electric scooter to run most efficiently, the battery temperature must be charged and used within the temperature range indicated in the battery specification.
  - Lithium batteries are considered hazardous and require permission from local laws when transporting them.
  - Charging lithium batteries that have been over-discharged is prohibited. Batteries that have been over-discharged are a safety hazard and should only be disposed of by scrapping.

### Tip: When the internal temperature of the battery exceeds 45°C, the battery is protected and cannot be charged.

- ⚠ Do not charge the battery at high temperatures (45°C) or in a high temperature (45°C) environment.
- ⚠ Only use the charging equipment provided by us to charge the electric vehicle.
- ⚠ The normal repeated charging is about 500 times, normal use can reach 600-800 times, the specific number of uses is related to the environment in which the battery is used. Li-ion batteries can be dangerous when charging, so please charge outdoors.

#### 4.3 Precautions for Charging

- Open the charging port adhesive cover and make sure that the charging port is dry and that the charging port is free of foreign objects.
- Plug the charger into the charging port of the electric scooter first, then plug the other end of the charger into the mains (100V-240V; 50/60 Hz) and make sure the charging indicator light is on properly (red).
- When the indicator light on the charger changes colour, (green) it indicates normal charging, otherwise check that the wiring connections are good.
- When the indicator light on the charger changes colour, it indicates that the battery is 99% full and you can stop charging; you can also continue charging for about half an hour, do not charge for too long, as prolonged charging will affect the battery life.
- After charging, make sure to cover the dust cover of the charging port to avoid short circuit due to the charging port touching external metal objects.

### Basic Parameters

M5 Pro			
Packaging information	Dimensions of the inner box packaging	1290x255x495mm	
	Dimensions of outer box packaging	1310x275x525mm	
	Gross weight	43.3kg	
Product basics	Unfolded body dimensions	1280x600x1260mm	
	Folded body dimensions	1280x255x505mm	
	Net product weight	37.5kg	
	Maximum load capacity	120kg	
	Wheels	Front wheels:11-inch Rear wheels:10-inch	
	Hill Climbing	15°	
	Max. range	77km (At a constant speed of 30km/h at a weight of 70kg)	
Batteries	Capacity	20Ah	
	Voltage	48V	
	Charging time	8-9H	
	Charger parameters	Input voltage	100-240V
		Output voltage	54.6V
	Output current	2.0A	

### Daily Maintenance

**Notes on maintenance:**  
● Ensure that the charger and charging cable of the scooter are disconnected and that the scooter is switched off. Wipe the housing with a soft cloth to clean the scooter. Do not over-lubricate the bearings for maintenance.

- ⚠ **Warning**
  - It is forbidden to use a high-pressure water gun or immerse the scooter in liquid to clean it, as this will cause permanent damage to the internal electronics of the main unit.

**Storage**  
● Please fully charge your scooter before storing it to prevent over-discharging the battery if it is not used for a long period of time, and ensure that it is charged at least once every 1 month. If the storage temperature is below 0°C, do not charge the scooter, place it in a warm environment (above 10°C) and then charge it. Please store the scooter indoors in a dry place at a suitable temperature. You can cover the scooter to prevent dust from accumulating and affecting its performance.

⚠ **Warning**  
● To protect the user's safety, the user must not dismantle the scooter, otherwise the user automatically waives the maintenance and warranty rights of the product.

### Troubleshooting

If your problem cannot be solved by the following methods, please contact your sales outlet or dealer for repair.

Description of defective phenomenon	Treatment
Cannot be turned on	Check whether the battery is charged and whether the plug is in place
Unable to charge	1. Check that the plug is charged; 2. Check that the charger AC plug is in place (indicator light is on); 3. Check that the charger plug is correctly plugged into the charging port of the whole vehicle.

### Packaging List

- Electric bicycle packing list:**  
Complete bicycle: 1 unit  
Charger: 1pc  
Instruction manual: 1 book  
Tool kit: 1 pack

Open the package if you find any damage or missing, please contact us in time, we will replace or make up for you as soon as possible.